

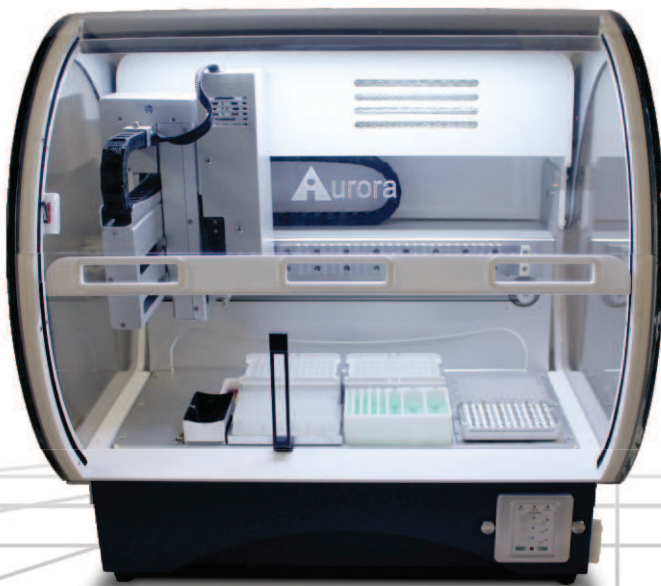
## VERSA 10 NAP Workstation

The VERSA™ 10 Nucleic Acid Purification (NAP) Workstation is a compact, cost-effective, automated liquid handling workstation uniquely designed for nucleic acid extractions. The 8-channel SyringePipettor streamlines extraction protocols, while the single-channel functionality gives users the capability to carry out hit picking and plate reformatting functions. The system completes low to medium throughput magnetic bead-based extraction protocols reproducibly with high yield and purity.

The VERSA 10 NAP is an open system that permits the use of most 3<sup>rd</sup> party extraction kits and diverse labware. The small footprint enables users to carry out pipetting protocols in a biosafety hood.

The versatility of this system accommodates diverse applications in genomics, proteomics, cellomics and general liquid handling with high precision, throughput and accuracy. Additionally, this workstation conserves expensive reagents, eliminates concerns associated with manual volumetric variations and automates all repetitive pipetting protocols.

Liquid Handling



VERSA 10 NAP Workstation

### FEATURES

- Magnetic bead-based nucleic acid extraction workstation
- Compact workstation with small footprint
- Highly accurate air-displacement technology
- Compatible with 3<sup>rd</sup> party reagents and diverse labware including 96- and 384-well plates
- 4- or 8-channel liquid handling head with single channel function
- Temperature regulation modules including:
  - Plate heater / cooler block
  - Reagent cooler block
  - Shaker with integrated heater / cooler
- Plate mover
- HEPA / UV / Fluorescent light enclosure

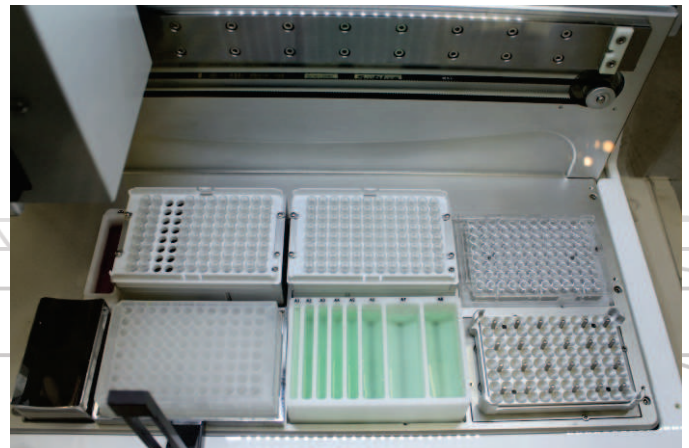
### APPLICATIONS

#### Genomic:

- Nucleic acid extraction and isolation
- DNA size selection
- Bioseparations
- Bioenrichment
- Protein isolation
- Cell isolation

#### General Liquid Handling:

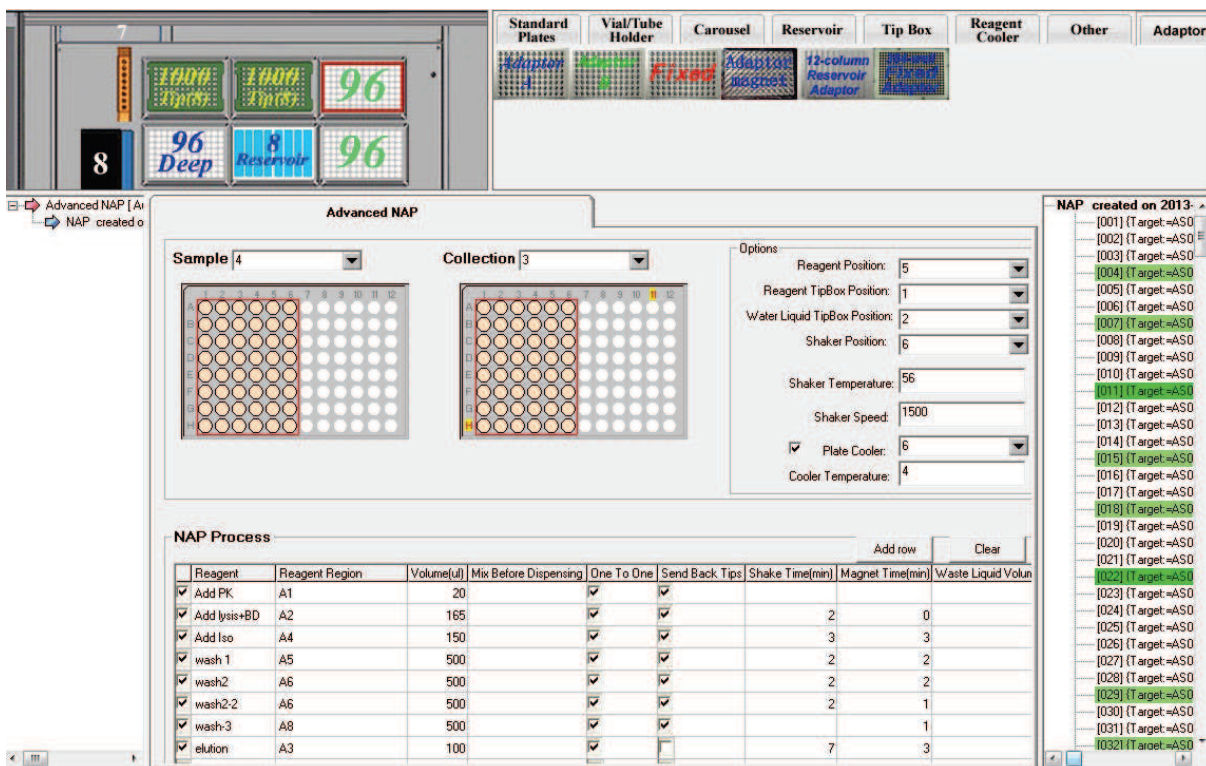
- Hit picking
- Reagent pooling
- Tube to plate transfers
- Serial and parallel dilution
- Plate transfer, replication and reformatting



VERSA 10 NAP Deck

## SOFTWARE & DECK

Various tabs within the VERSAware software window enhance the underlying versatility of the workstation by allowing the user to perform diverse liquid handling functions. Customized methodologies are easy to create and load into the library of stored protocols using import and export functions within the software.



## SPECIFICATIONS

VOLUME	1 µL to 1000 µL
DECK CAPACITY	Six (6) deck positions for microtitre plates (supports both 96- and 384-well plates and includes adaptor to accommodate individual and/or 0.1 mL and up strip-tubes), deep-well reservoirs and tip boxes
PIPETTE TIPS	20 µL, 50 µL, 200 µL and 1000 µL standard disposable tips (96-well racked)
PIPETTING HEAD	<ul style="list-style-type: none"> <li>• Four- (4) or eight- (8) channel SyringePipettor with tip changer (air displacement technology) with single channel functionality</li> <li>• Plate transporter</li> </ul>
ACCESSORY OPTIONS	<ul style="list-style-type: none"> <li>• Plate cooler / heater</li> <li>• Magnetic block</li> <li>• Reagent cooler block</li> <li>• Shaker with integrated heater / cooler</li> </ul>
SOFTWARE	Customized user-friendly VERSAware software featuring simple on-screen prompts, drop down menus and stored protocols.
COMPUTER SYSTEM	Desktop PC with LCD monitor and Windows operating software
DIMENSIONS	W 45 x L 57 x H 54 cm / W 18 x L 22.5 x H 22 in
WEIGHT	31 kg / 68 lb

NOTE: Instrument specifications may change without notice as an ongoing effort of product improvement.

**North American Sales:** Aurora Biomed Inc.  
1001 East Pender Street  
Vancouver BC Canada V6A 1W2  
Phone: 1.800.883.2918 • 604-215-8700  
Email: info@aurorabiomed.com  
Website: www.aurorabiomed.com



**International Sales:** Aurora Instruments Ltd.  
1001 East Pender Street  
Vancouver BC Canada V6A 1W2  
Phone: 604-215-8700 • Fax: 604-215-9700  
Email: info@aurora-instr.com  
Website: www.aurora-instr.com