

## VERSA™ 10 Workstation

The VERSA 10 workstation is a compact, cost effective, high throughput, automated air-displacement liquid handling workstation. The system addresses the need for low to medium throughput liquid handling capabilities from a small bench top workstation. By combining either a 4 or 8 channel head with single channel functionality, this workstation enables the automation of routine protocols of varying throughput. The compact, 6 position deck enables users to carry out pipetting protocols in a biosafety hood or areas with limited space. As an open system, the VERSA 10 accommodates diverse reagents and labware, at an affordable price.

The versatility of this system permits many diverse protocols (including PCR/qPCR setup, serial dilution, plate reformatting and plate replication from one type of labware to another) to be carried out with high precision, throughput and accuracy. Additionally, this workstation assists scientists to conserve expensive reagents, eliminates concerns associated with manual volumetric variations caused by handling errors, and automates all repetitive pipetting protocols.

### • FEATURES

- Compact workstation with small footprint
- Highly accurate air-displacement technology
- Accommodates common reagents and diverse labware including 96 and 384 well plates
- 4 or 8 channel liquid handling head with single channel function
- Temperature regulation modules including:
  - Plate heater / cooler block
  - Reagent cooler block
  - Shaker with or without integrated heater / cooler
- OEM customization and development options
- HEPA / UV / Fluorescent light enclosure option

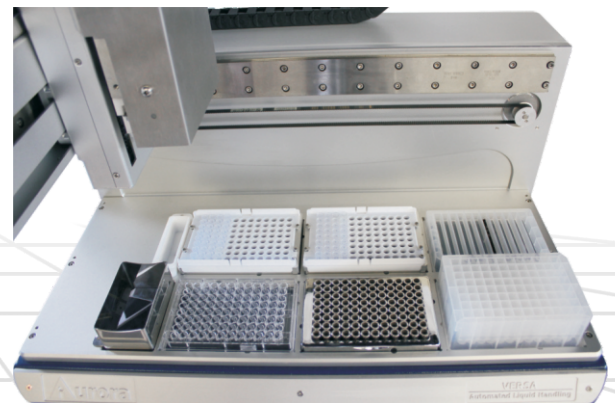
### APPLICATIONS

- Single and multiplex real-time PCR set-up
- Sequencing reaction set-up
- Restriction digest / ligation
- Reverse transcription
- Oligo based gene synthesis
- General liquid handling:
  - Reagent pooling
  - Serial and parallel dilution
  - Plate reformatting & plate replication
  - Tip based mixing

VERSA 10 Workstation

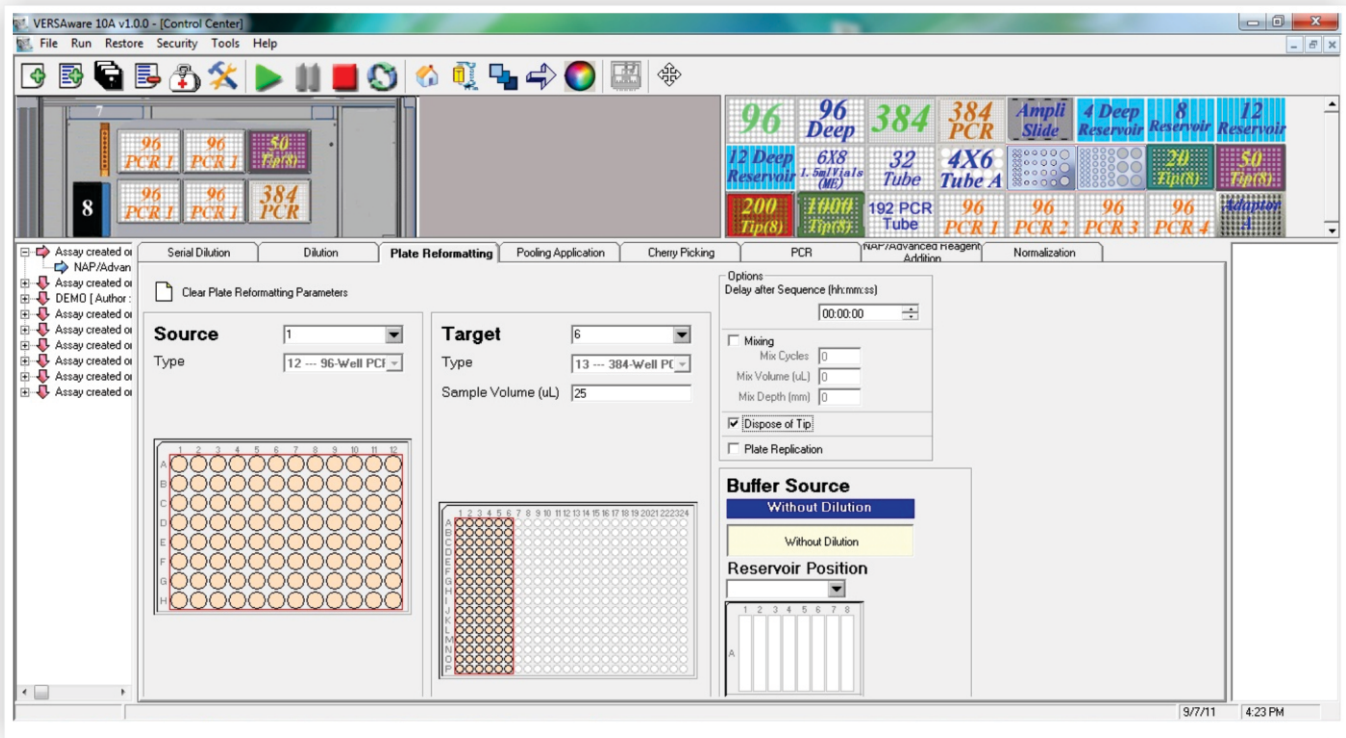


VERSA 10 Workstation Deck



## SOFTWARE & DECK

Various tabs within the VERSAware software window enhance the underlying versatility of the workstation by allowing the user to perform diverse liquid handling functions. Customized methodologies are easy to create and load into the library of stored protocols using import and export functions within the software.



## SPECIFICATIONS

VOLUME	1 µL to 250 µL
DECK CAPACITY	Six (6) deck positions for microtitre plates (supports both 96- and 384-well plates and includes adaptor to accommodate individual and/or 0.1 mL and up strip-tubes), deep-well reservoirs and tip boxes
PIPETTE TIPS	20 µL, 50 µL and, 200 µL standard disposable tips (96-well racked)
PIPETTING HEAD	Four (4) or eight (8) channel SyringePipettor with tip changer (air displacement technology) with single channel functionality
ACCESSORY OPTIONS	<ul style="list-style-type: none"> <li>•Plate cooler / heater</li> <li>•Reagent cooler block</li> <li>•Shaker with or without integrated heater / cooler</li> </ul>
SOFTWARE	Customized user-friendly VERSAware software featuring simple on-screen prompts, drop down menus, and stored protocols.
COMPUTER SYSTEM	Desktop PC with LCD monitor and Windows operating software
DIMENSIONS	W 45 x L 57 x H 54 cm
WEIGHT	31 kg

*NOTE: Instrument specifications may change without notice as an ongoing effort of product improvement.*

**North American Sales:** Aurora Biomed Inc.  
 1001 East Pender Street  
 Vancouver BC Canada V6A 1W2  
 Phone: 1.800.883.2918 • 604-215-8700  
 Email: info@aurorabiomed.com  
 Website: www.aurorabiomed.com



**International Sales:** Aurora Instruments Ltd.  
 1001 East Pender Street  
 Vancouver BC Canada V6A 1W2  
 Phone: 604-215-8700 • Fax: 604-215-9700  
 Email: info@aurora-instr.com  
 Website: www.aurora-instr.com