

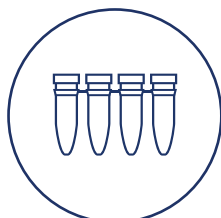


VERSA 10 GENE

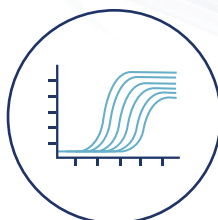
Automated Liquid Handling Workstation



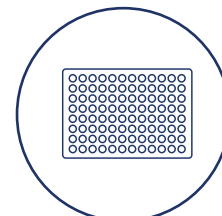
Nucleic Acid
Purification



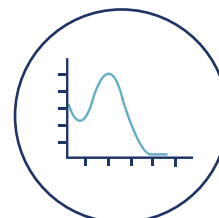
PCR Setup



qPCR
Amplification
setup



Libraries
Normalization



Libraries
Quantification

The VERSA® 10 Gene workstation is a compact and cost-effective automated liquid handling workstation designed to support various genomic workflows. The 4 or 8-channel pipetting head streamlines protocols while the single channel functionality offers the flexibility to perform complex liquid handling tasks.

Similar to all of Aurora's liquid handlers, the VERSA 10 Gene is an open system that supports the use of a broad range of commercially available kits and various types of labware. This liquid handler is recognized for its exceptional accuracy, reproducibility, and throughput, which help to reduce reagent consumption, eliminate pipetting errors, and enhance laboratory productivity.

VERSA 10 Features



Compact, versatile
& economical
design allows for a
small lab footprint



Temperature regulation
module provides precise
temperature control for
reagents and samples



UV HEPA filtered
enclosure helps
to eliminate
contamination

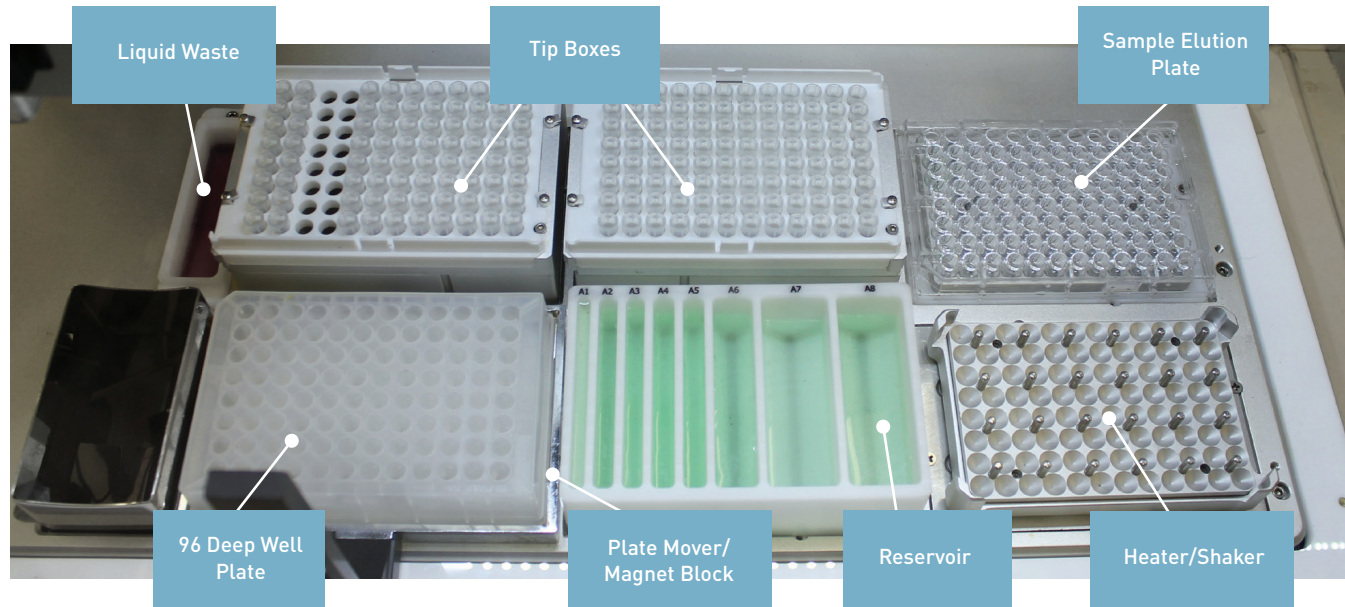
ILLUMINATING
RESULTS

1 (800) 883-2918 Toll-Free
+1 (604) 215-8700

info@aurorabiomed.com
aurorabiomed.com



Sample VERSA 10 DNA/RNA Purification Deck Layout



VERSA 10	Specifications
Volume	1 µL to 250 µL (PCR Setup), 1 µL to 1000 µL (DNA/RNA Purification)
Deck Capacity	6 deck positions for microtiter plates (supports both 96 and 384-well plates and includes adaptor to accommodate individual and/or 0.1 mL and up strip-tubes), deep well reservoirs and tip boxes
Pipetting Head	4 or 8 channel syringe pipettor with single channel functionality
Plate Transporter	Moves plate from magnetic block to heater/shaker
Accessory Options	<ul style="list-style-type: none">• Plate cooler / heater• Reagent cooler block• Shaker with or without integrated heater• HEPA/UV/Fluorescent light enclosure
Length x Depth x Height	65 x 43 x 52 (cm) / 25.6 x 16.9 x 20.5 (in)
Weight	27 kg / 59.5 lbs