

# TRANSFORM SERIES

## MICROWAVE DIGESTION

### Solution for Sample Preparation:

---

- Unparalleled Safety
- Easy-of-Operation
- User-Friendly Software



TRANSFORM 800

# Microwave Digestion System

Aurora's Transform Series of automatic top-loading, closed-vessel microwave digestion systems are equipped with high-pressure capabilities to enhance digestion quality while reducing digestion time. These systems can simultaneously process up to 10 high-pressure vessels, providing a fast, automated method for digesting even the most challenging samples.



## Benefits

- > Reduces digestion time from hours to minutes compared to conventional methods.
- > Prevents loss of volatile elements.
- > Prevents contamination of environmental samples.
- > Minimizes solvent consumption.
- > Provides complete monitoring of reaction conditions
- > through computer-controlled software.

## TRANSFORM Series Features

Fluoropolymer-coated vessel liners

High Efficiency cooling system

1200 W continuous microwave power output with inverter technique

Evenly distributed microwave field chamber

Integrated EPA protocols and methods directory

Extensive safety precautions

Direct sensing and control of sample temperature

Instruments	Number of Vessels	Maximum Temperature	Maximum Pressure
TRANSFORM 680	6	250 °C	400 psi
TRANSFORM 800	10	250 °C	800 psi

## Temperature and Pressure Control and Sensing

The innovative pressure sensor technology of the TRANSFORM 800 provides the most accurate pressure range possible. Combined with the temperature probe, the pressure sensor ensures that users have complete control of reaction conditions. The advanced thermocouple probe enables fast and accurate temperature control and sensing.

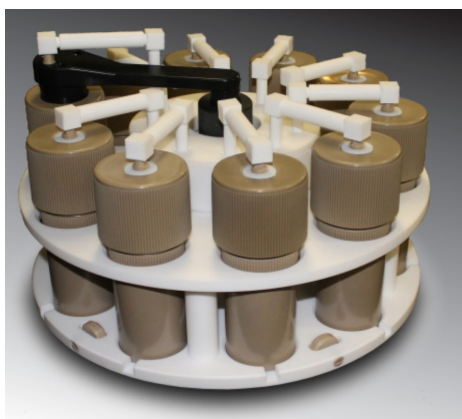


**TRANSFORM 800 Chamber**

## Unparalleled Safety

The TRANSFORM Series was built with operator safety as the top priority. The system features a 4-level protection mechanism to ensure user safety if the pressure rises above safe limits.

1. Round, pressure resistant, fluoropolymer-coated stainless steel chamber contains an explosion
2. Spring-Loaded Inner Lid Cavity buffers unexpected shock
3. Top-Loading Automatic Door provides heavy-duty protection
4. Reinforcement Bar secures the system's lid in place
5. High Quality Engineered Plastics allow a maximum vessel pressure of 3000 oC
6. Rupture Disks burst to release vapors into a collection reservoir
7. Temperature and Pressure Senses allow for complete understanding of the reaction status



**TRANSFORM 800 Vessel Carousel**

## Standard Methods Compliance

The TRANSFORM Series is compliant with a variety of EPA methods and ASTM and USP standards. The software comes with a variety of pre-installed EPA methods for the operator's convenience.

**EPA Method 3015** Microwave-assisted acid digestion of aqueous samples and extracts

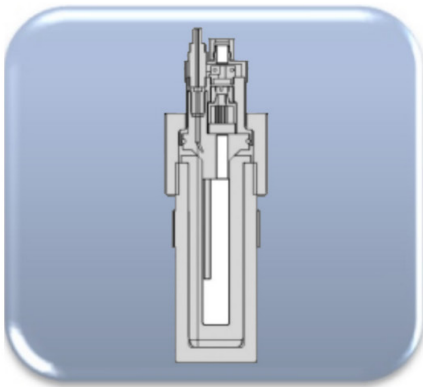
**EPA Method 3051** Microwave-assisted acid digestion of sediments, sludges, soils and oils

**EPA Method 3052** Microwave-assisted acid digestion of siliceous and organically-based matrices

**USP 233** The analysis of elemental impurities in drug products, drug substances and dietary ingredients

## Standard Methods Compliance

The TRANSFORM Series is simple to install and operate. It allows for easy one-step operation and total computer control. The carousel and vessels can be easily removed and replaced with a second set. This allows operators to continuously digest samples with no delay between runs.



Sensor Vessel (Cross-section)



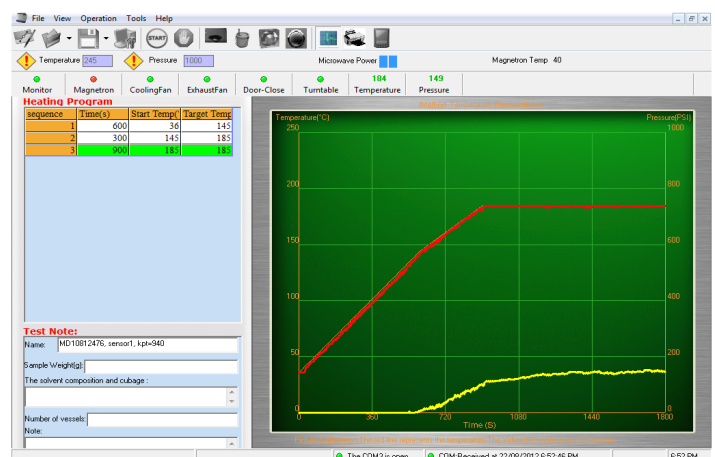
Liner



Vessel

## Easy-of-Operation

- > Flexibility to program individual methods for customizable sample preparation
- > Windows-based software for real-time temperature and pressure control
- > EPA methods and parameters pre-installed to allow for common sample digestions
- > Virtually unlimited method storage capacity

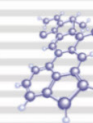


## Regulatory Standard and Certification

- > RoHS and WEE compliant
- > ISO 9001 certified- Virtually unlimited method storage capacity

# Smart Solutions for Elemental Analysis

## TRANSFORM Microwave Applications



FOOD AGRICULTURE FISHING	ENVIRONMENTAL	ELECTRONICS MANUFACTURING TEXTILE	PETROCHEMICAL MINERALS METALLURGICAL	MEDICAL BIOLOGICAL PHARMACEUTICAL
Seafoods	Waterwaste	Toys	Rocks & Minerals	Blood & Urine
Seeds	Soil & Sludge	Cotton	Steel & Alloys	Animal Tissue & Fluids
Poultry	Crude Oil	Plastics	Metals	Drug Tablets

## Specifications

	TRANSFORM 680	TRANSFORM 800
Dimensions (W x L x H)	48 x 46 x 43 cm / 19" x 18" x 17"	48 x 55 x 48 cm / 19" x 22" x 19"
Weight	30 kg / 66 lbs	50 kg / 110 lbs
Power Output	1200 W	1200 W
Vessel Volume	80 mL	50 mL
Electrical Requirements	220 V / 12 A	220 V / 12 A



Please note : Instrument specifications may change without notice as an ongoing effort of product improvement.